

# PROVISA PLUS 10

## TEMPORARY CROWN & BRIDGE MATERIAL



Fig. 1

### 1. PREPARATION OF THE IMPRESSION

Before any preparation is done (stump or bridge preparation, tooth extraction), take a situation impression using alginate or silicone. Interdental ridges should be excised to increase the amount of material later available for finishing (Fig. 1). If there is a gap between molars, a connecting bar between prepared teeth is created by cutting a groove prior to impression-taking, use prefabricated teeth as placeholders. Block these solidly, e.g. with wax. Alginate impressions should be kept at 100% rel. humidity until filling with Provisa Plus 10<sup>®</sup>.

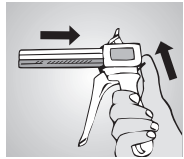


Fig. 2

### 2. MIXING AND APPLICATION

Cartridge material is extruded using the dispensing gun (Fig. 2). After inserting cartridge into dispensing gun, unscrew cap and carefully extrude a small amount of material to insure proper flow from both ducts (Fig. 3). Mount the mixing cannula by using the guides on the cannula and the cartridge and lock in place by rotating in the opposite direction (Fig. 4). Feed material applying even pressure. Prior to use, dispense a small amount of material and visually check that the base and catalyst paste are mixed omogeneously (Figure 5). Only then dosing can be performed individually. Leave mixing cannula on cartridge after use. Use only blue Provisa Plus 10<sup>®</sup> blue mixing cannulas!

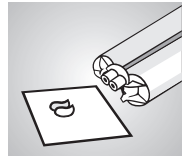


Fig. 3

Apply Provisa Plus 10<sup>®</sup> to deepest parts of impression first and evenly fill impression up to gingival level (Fig. 6).

### 3. INTRAORAL MODELLING OF THE TEMPORARY

Seat filled impression onto prepared teeth and remove any excess material with a plastic tool. Provisa Plus 10<sup>®</sup> will attain a hard-elastic consistency after 2 - 3 min. after extrusion, at which time temporary and impression can be removed from mouth. Be sure to closely follow the progress of polymerisation, as removal is only possible while material is still elastic (Fig. 7).

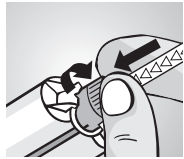


Fig. 4

### 4. HARDENING AND FINISHING

Remove temporary from impression and remove excess material and proximal undercuts. After 6 - 7 min., material is completely cured and hard enough to be trimmed and polished with finishing burs. Contact with oxygen creates an inhibition layer on the temporary, which should be removed using ethyl or isopropyl alcohol. Instead of polishing, the finished temporary can be surface-sealed.

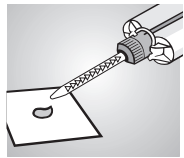


Fig. 5

### 5. FASTENING THE TEMPORARY

Temporaries can be fastened using commercially available temporary dental cements. Please note that any residues of eugenol containing cements must be completely eliminated after removal of the temporary from the mouth, as they may interfere with the setting process if composite-type cements are used for subsequent attachment.



Fig. 6

### 6. REPAIRING AND MAKING MINOR CORRECTIONS

Repairs or reinforcement can be performed. Polymerisation is effected by light curing, using a hand lamp. Thoroughly clean and dry temporary. Roughen area to be treated and be sure to remove any residual dust from grinding. Finish curing process by exposing all areas to light for additional 30 sec. Repaired areas can then be trimmed and polished.

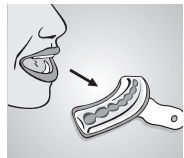
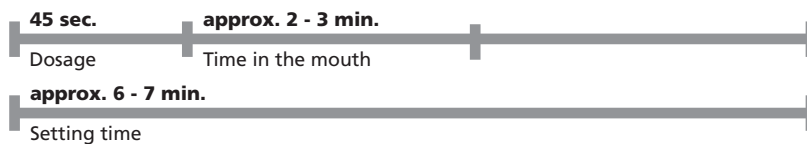


Fig. 7

### IMPORTANT HINTS

Where movement is impeded or blocked, discard the cartridge. Do not apply force. Some ingredients of Provisa Plus 10<sup>®</sup> may cause allergic reactions of sensitive patients. If such reactions are experienced, discontinue the use of the product. Avoid contact with skin and eyes. In the event of accidental contact, rinse with plenty of running water, and consult an specialist if necessary. Please follow the instructions of the safety data sheet.

Only for dental use by qualified personnel.



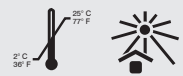
### INDICATIONS FOR USE:

- Construction of crown and bridge temporaries
- Short- and long-term temporaries

### TECHNICAL DATA:

- Mixed volume: 50 ml (cartridges)
- Mixing ratio: 10:1
- Product colors: A1 / A2 / A3 / A3.5 / B1 / Bleach (as indicated on package)
- Dosage and application time: approx. 45 sec.\*
- Setting time in the mouth: approx. 2 - 3 min.\* (hard-elastic phase, from beginning of mixing)
- Setting time: approx. 6 - 7 min.\* (until setting is completed)
- Application: At 23 °C ± 2 °C / 73 °F ± 3.6 °F

- Storage:



- \* At 23 °C: Increased temperatures accelerate, decreased temperatures prolong these times.

### PHYSICAL PROPERTIES:

- Compressive strength: > 250 MPa
- Flexural strength: > 80 MPa
- Diametral tensile strength: > 40 MPa
- Barcol hardness: > 37
- Water uptake: 0.9% (w/w)
- Maximal temperature reached during setting: < 40 °C / 104 °F

### ORDERING INFORMATION:

Contents: (1) 50ml cartridge and (10) mix tips

Shade A1 [4815-783]



Shade A2 [4815-792]



Shade A3 [4815-809]



Shade A3.5 [4815-818]



Shade B1 [4815-827]



Bleach [4815-836]



Distributed by

**BencoDental**

800.GO.BENCO • benco.com  
295 CenterPoint Blvd., Pittston, PA 18640



Do not reuse

Caution: Federal US law restricts this device to a sale by or on the order of a dentist (or trained specialist personnel).