

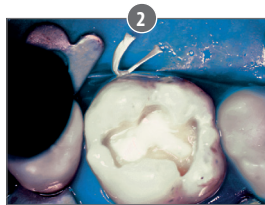
Lime-Lite™ ENHANCED LIGHT CURE CAVITY LINER

Calcium, Phosphate and Fluoride Releasing • Moisture Tolerant • Universal Dentin Shade • Radiopaque

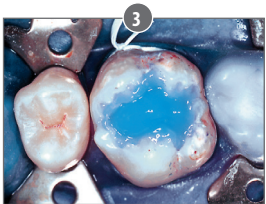
No Sensitivity and a More Adhesive Cavity Liner and Base



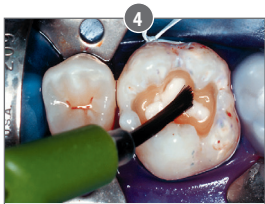
1 Place Lime-Lite Enhanced in the cavity prep.



2 Light cure Lime-Lite Enhanced 20 seconds.



3 Etch the cavity prep with Etch-Rite 38% phosphoric acid.



4 Apply DentTASTIC UNO to the moist dentin surface for light cure, or UNO + DUO for dual cure procedures.



5 Final restoration incrementally layered with composite.

Photos courtesy of Dr. C. H. Pameijer

Specially formulated for use with adhesives, composites and conventional restorative materials

Improved moisture-friendly formula:

- Greater adhesion to dentin
- Greater release of calcium, phosphate and fluoride
- Durable – high compressive strength and wear resistance
- Shock absorbing – will not fracture or crumble
- Contains no Bisphenol A, no Bis-GMA, and no BPA derivatives



	LLE	4 x 1.2mL/2 gm syringes Lime-Lite Enhanced + 20 applicator tips
	LLE3	3mL/5 gm syringe Lime-Lite Enhanced + 20 applicator tips

	20L20	Pink, 20 ga x 1/2", Prebent Tips, pkg. 20
	20L100	Pink, 20 ga x 1/2", Prebent Tips, pkg. 100