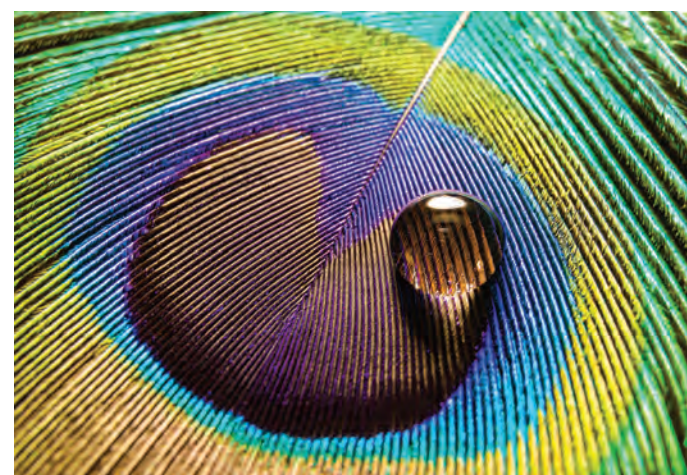


## INSIDE THE TECHNOLOGY

### Structural Color

Structural color occurs when different wavelengths of light are amplified or weakened by the structure of a material itself, expressing colors other than what the material may actually be. From morpho butterflies to peacocks, some of the rarest and most beautiful colors in nature are the result of structural color.



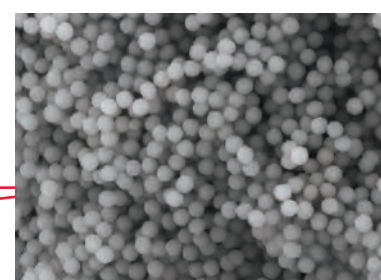
### Smart Chromatic Technology

Through the utilization of Tokuyama's spherical fillers and Smart Chromatic Technology, OMNICHROMA is the first use of structural color in composite dentistry.

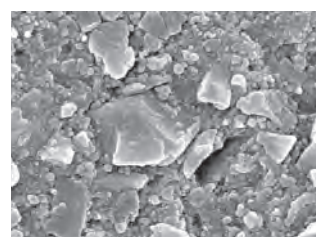
OMNICHROMA's structural color mechanism is made possible by the precise shape and size of the filler within the composite. The 260nm identical spherical fillers of OMNICHROMA are the perfect size and shape to produce the effects of structural color to match the surrounding tooth color.



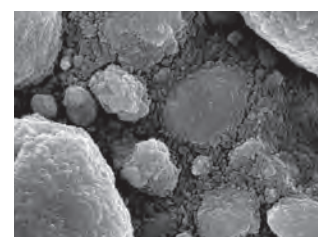
SEM Image of OMNICHROMA at 5,000x Magnification



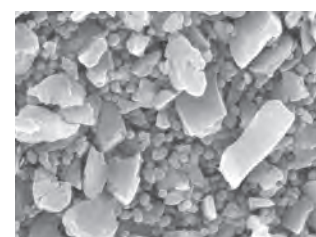
SEM Image of OMNICHROMA at 20,000x Magnification



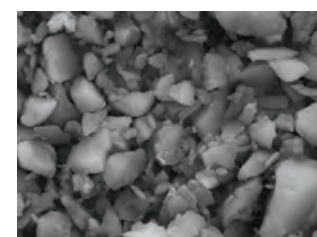
Herculite™ Ultra at x20,000 magnification



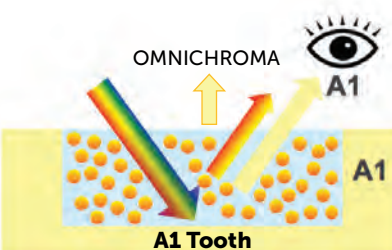
Filtek™ Supreme Ultra at x20,000 magnification



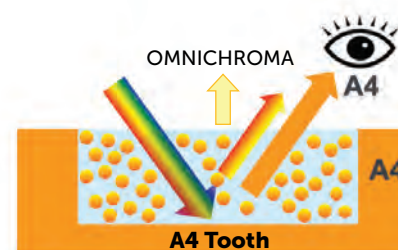
Tetric EvoCeram® at x20,000 magnification



TPH Spectra® ST at x20,000 magnification



Excellent color match  
A1 teeth restored using OMNICHROMA



Excellent color match  
A4 teeth restored using OMNICHROMA

OMNICHROMA Fillers generate red-to-yellow structural color as ambient light passes through the composite, without the need of added pigments and dyes. The red-to-yellow color combines with the reflected color of the patient's surrounding dentition, creating the perfect match from A1 to D4 and beyond.

## FEATURES & BENEFITS

- Unprecedented shade-matching ability and esthetics
- Exceptional handling, polishability, and strength
- Shade matches both before and after bleaching
- Reduction of inventory and expired composite
- Minimized chair time and reliance on shade-matching procedures

## ONE-SHADE OMNICHROMA PRODUCTS



OMNICHROMA SYRINGE (4g syringe)  
Product Number: 10116



OMNICHROMA PLTs (20 x 0.2g tips)  
Product Number: 10126



OMNICHROMA BLOCKER SYRINGE (4g syringe)  
Product Number: 10117



OMNICHROMA BLOCKER PLTs (20 x 0.2g tips)  
Product Number: 10127

# omniCHROMA®

## Every shade. One choice.

# 1 SHADE

# TO MATCH

# ALL PATIENTS

Order OMNICHROMA Today  
Call +1 (877) 378-3548 or visit TOKUYAMA-US.COM

**Tokuyama Dental America Inc.**

740 Garden View Court, Suite 200, Encinitas, California 92024

Call: +1 (877) 378-3548 | Fax: +1 (760) 942-7212 | Email: info@tokuyama-us.com | tokuyama-us.com

OMNICHROMA is a trademark of Tokuyama Dental. All rights reserved. All other trademarks and registered trademarks are not trademarks of Tokuyama Dental.

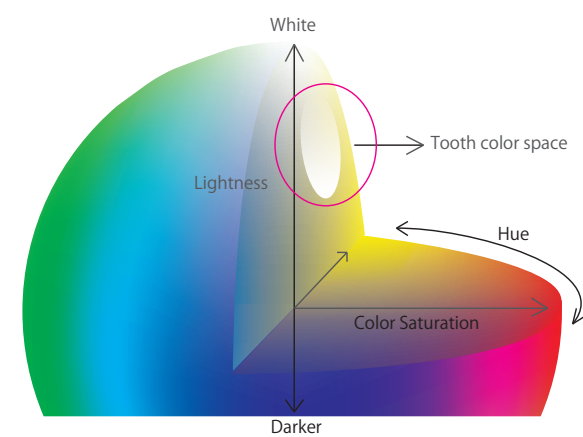


# OMNICHROMA®

The culmination of 35 years of research and development, Tokuyama Dental is proud to present OMNICHROMA, the world's first dental composite that matches every tooth with a single composite shade.

## Color and Composites

All smiles have something in common, and that is the colors that make up human teeth shades. From A1 to D4, all shades of teeth express a narrow range of red-to-yellow color.



To match every smile, most composite brands require multiple shades. That's because most composites today depend on the color of red and yellow dyes added to the resin material to emulate tooth shades. This means that dentists must keep a large inventory of different composites to accommodate a variety of patients.

## OMNICHROMA Changes Everything

OMNICHROMA is the first universal composite that offers one shade to match all patients. The red-to-yellow structural color generated by OMNICHROMA combines with the reflected color of the surrounding tooth and creates the perfect match for almost every patient.



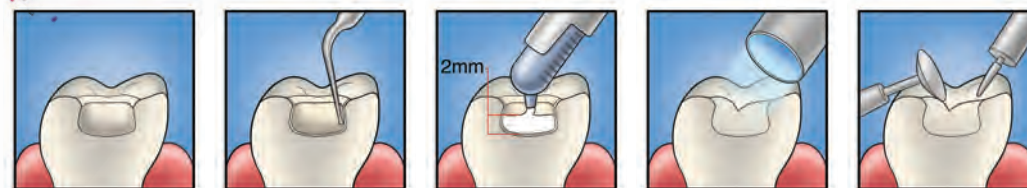
## Just One Shade for Every Patient

- No more shade selecting needed
- No more excess product for incidental shades
- No more wasted composite

## Most Clinical Cases

OMNICHROMA uses a standard universal procedure. The paste is opaque-white before curing, allowing for higher visibility and easier placement. After curing, it becomes natural in appearance and matches the color of the surrounding tooth.

### POSTERIOR



Preparation: Add chamfers to help eliminate margin visibility and aid shade matching.

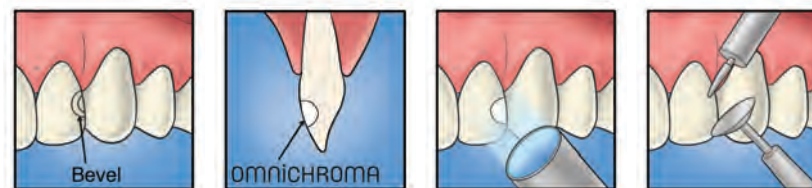
Apply bonding agent according to manufacturer's instructions.

Fill with OMNICHROMA.

Light cure. (Curing time varies depending on intensity of curing light.)

Finish and polish.

### ANTERIOR



Preparation: Add bevels to help eliminate margin visibility and aid shade matching.

Bond and then fill with OMNICHROMA.

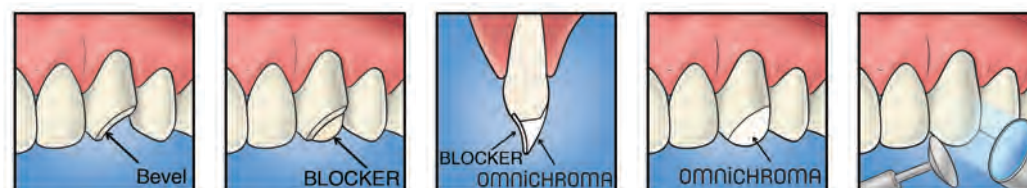
Light cure. (Curing time varies depending on intensity of curing light.)

Finish and polish.



## Cases with Limited Tooth Structure

In large Class III and IV cases, OMNICHROMA may experience shade-matching interference due to a lack of surrounding dentition. OMNICHROMA BLOCKER is a supplementary material to be used in conjunction with OMNICHROMA as a lingual layer to prevent shade-matching interference in these cases. OMNICHROMA BLOCKER can also be used to mask slight staining, or to reconstruct a highly opaque tooth.



Preparation and bonding: Add bevels to help eliminate margin visibility and aid shade matching.

Apply BLOCKER as a lingual layer. Thickness of the lingual layer can vary, but 0.5mm is illustrated as a guide. Light cure.

Apply OMNICHROMA as a secondary layer.

Note that OMNICHROMA is opaque white before curing. It blends naturally after curing.

Light cure, finish, and polish. (Curing time varies depending on intensity of curing light.)



Read all instructions, information, precautions, and notes in IFU before use.

## Case Studies



Class V

Class II

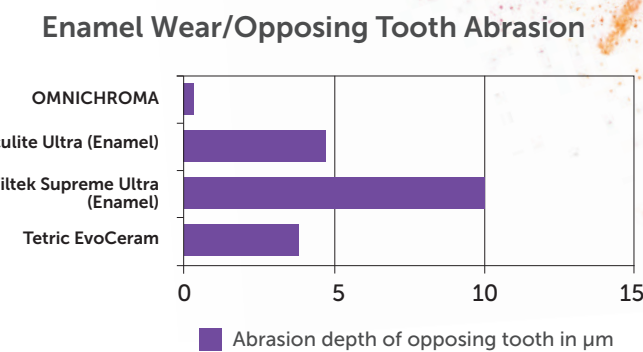
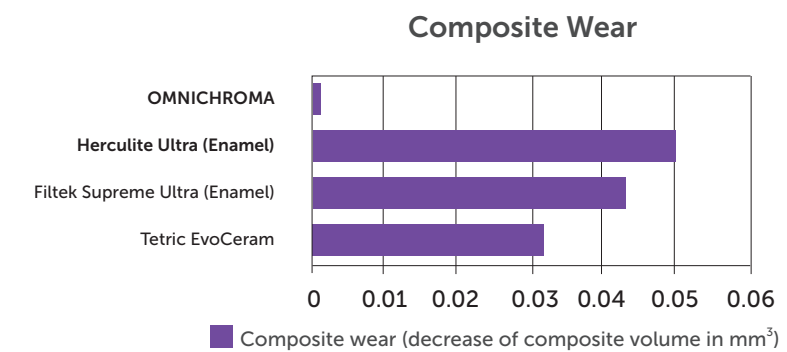
Class IV

Case images courtesy of Dr. James Chae, Diamond Bar, CA

## CHARACTERISTICS

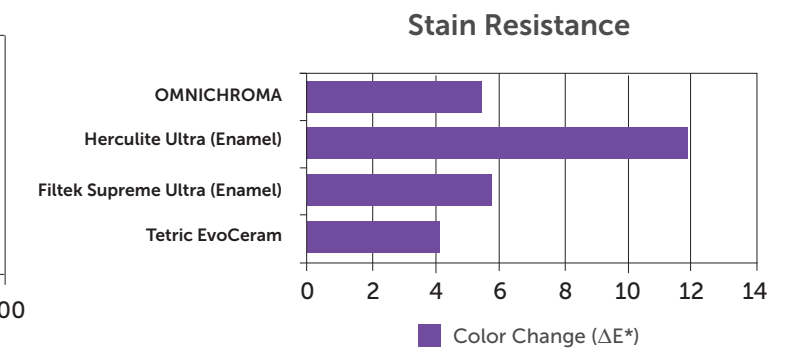
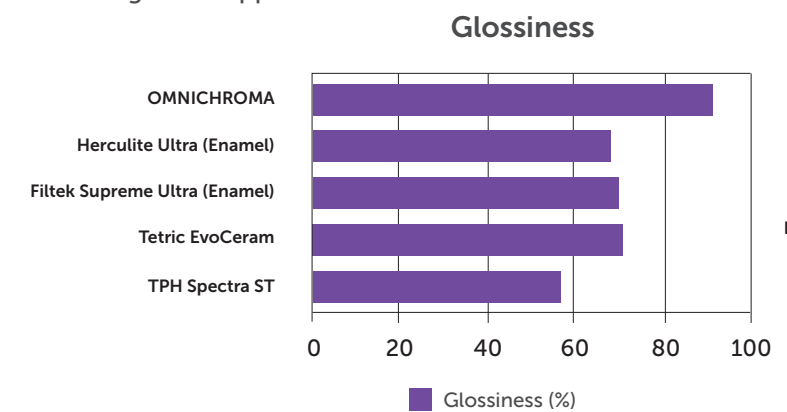
### Minimal Wear

OMNICHROMA excels in minimizing wear in both the composite itself and in opposing dentition, resulting in long-lasting restorations.



### Esthetics

OMNICHROMA produces extremely glossy results and maintains its cured color very well, resisting the effects of staining on its appearance.



### High Strength

OMNICHROMA's compressive and flexural strength is equal to or exceeds other commercially available composites, assuring dentists that patients can bite with confidence.

