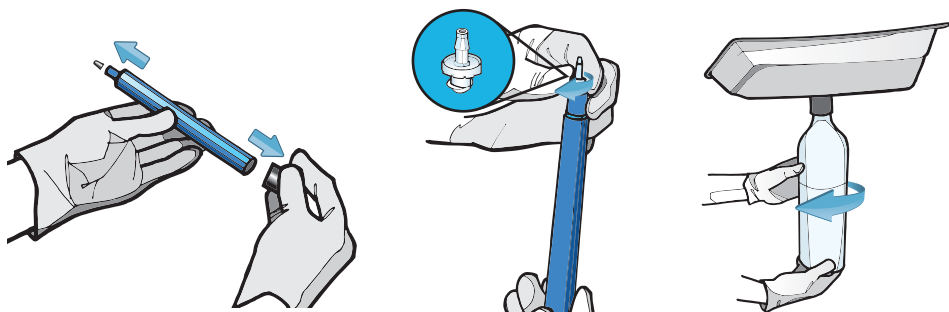




# Waterline Purification Straw Installation:

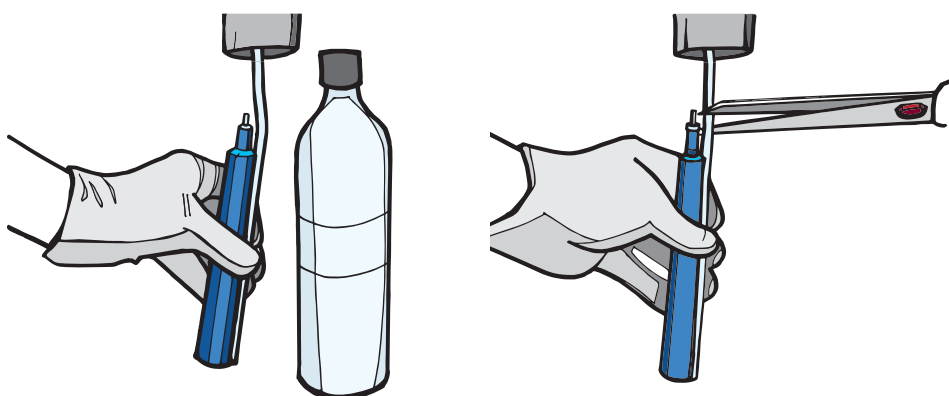
## 1. PREP

Practicing aseptic technique, remove the dark blue vinyl shipping caps from both ends of the Z3 Waterline Purification Straw. Then, attach the clear female luer lock to the Z3 Waterline Purification Straw. Remove the water bottle from the dental unit.



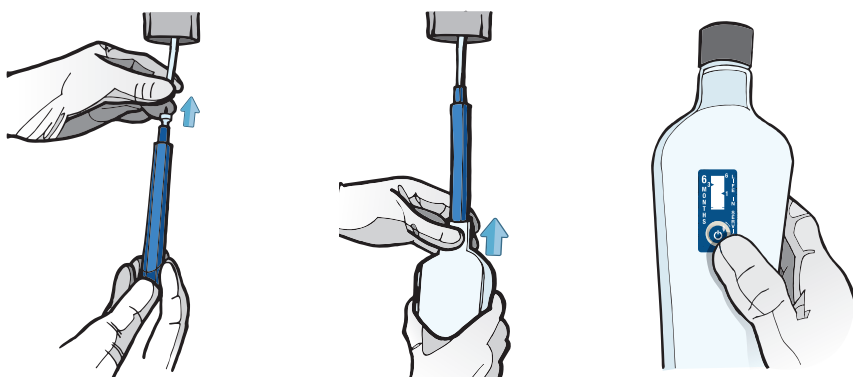
## 2. MEASURE

Place the Z3 Waterline Purification Straw and water bottle alongside the unit's uptake tube. When measuring, make sure there is approximately 1/4" between the bottom of the bottle and the Z3 Waterline Purification Straw. Then, cut the uptake tube at the top of the Z3 Waterline Purification Straw (not including the clear female luer lock).



## 3. CONNECT

Connect the Z3 Waterline Purification Straw to the uptake tube. Reattach the water bottle to the unit. Set the air pressure to 45psi. Flush cold water through the Z3 Waterline Purification Straw for 3-5 minutes. It is normal for water to have a slight tint during initial flush. Lastly, stick the 6-month replacement indicator on your water bottle or maintenance calendar. Activate by pressing firmly on bubble.



## Using the 6-Month Replacement Indicator:

Remove adhesive tape and place the 6-month replacement indicator on your water bottle or maintenance calendar. Activate by pressing firmly on bubble. The white window bar will begin to turn red. At six months, the entire window bar will be filled with red, letting you know it's time to replace the Z3 Waterline Purification Straw.

Note: Replacement indicators can provide +/- 15% time accuracy. Use as a visual reminder, but rely on documented installation date of each cartridge and replace at 6 months or 120L of water usage.



Shortly After  
Activation



1 Month



3 Months



6 Months:  
Replace Z3 Waterline  
Purification Straw

# Install Guide



## The Proven Z3® Waterline Purification Straw Protocol

### 1. SHOCK FIRST

Shocking is using a strong disinfectant to clean your waterlines. Shocking is an essential part of any treatment protocol.

- › Shock before installing each 6-month Z3 Waterline Purification Straw.
- › Shock when a water test reveals 200-500CFU/mL. Shock and retest when a water test fails.

**Never shock through the BluTube cartridge!** This can damage the straw. Always shock with the included dummy straw and follow these steps:

- 1 Attach the white male luer lock to the gray dummy straw.
- 2 Twist off the BluTube from the clear female luer lock.
- 3 Connect the dummy straw to the clear female luer lock.
- 4 Shock per instructions for use.
- 5 Re-attach the Z3 Waterline Purification Straw. If you are using a new Z3 Waterline Purification Straw, take note of the installation date and use the 6-month replacement indicator.

**REMEMBER:** Dummy straws are reusable!

### 2. TREAT DAILY - WITH Z3 WATERLINE PURIFICATION STRAW

Once installed, the Z3 Waterline Purification Straw will continuously treat the water in your dental unit waterlines for up to 6 months. So relax, it's fighting the battle for you.

#### In the morning:

- › Wipe down the outside of the Z3 Waterline Purification Straw.
- › Fill the water bottle with cold, fresh water and reattach to the dental unit. Flush lines for 2 minutes to start the day and 20-30 seconds between patients.

#### End of the day:

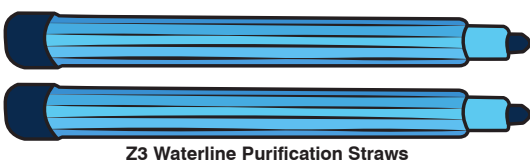
- › Remove water bottle from dental unit carefully to avoid damaging cartridge. Empty water from the bottle.
- › Reattach empty water bottle to unit.

### 3. TEST QUARTERLY

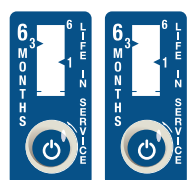
**Testing is the only way to verify if your protocol is effective.** OSAP recommends this testing frequency:

- › Test water quality monthly to establish effectiveness of you treatment protocol.
- › If results indicate that water quality is acceptable for two consecutive months, the frequency of testing may be reduced to a minimum of every three months.

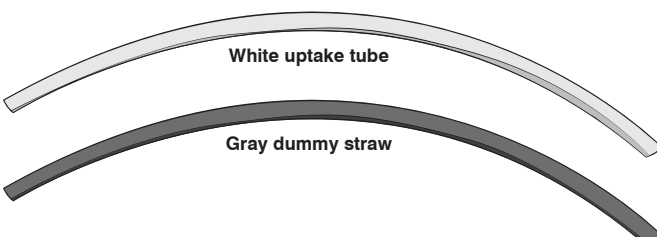
## What's In The Box:



Z3 Waterline Purification Straws



6-month indicators



White uptake tube

Gray dummy straw



Clear female luer lock



White male luer lock